

Facts &
Figures
2015

The
**GAM
BLER**

Pacific Films

ANNUAL STATE SUPPORT FOR FILM INDUSTRY 2011-2015

	Ministry of Culture	Cultural Endowment	Estonian Film Institute	Total
	EUR	EUR	EUR	EUR
2011	522 989	1 407 619	3 535 350	5 465 958
2012	1 063 288	1 664 001	3 434 384	6 161 673
2013	571 000	1 732 822	3 824 938	6 128 760
2014	341 000	1 921 296	4 692 311	6 954 607
2015	635 000	1 920 554	4 842 174	7 397 728

CINEMA PREMIERES 2010-2014

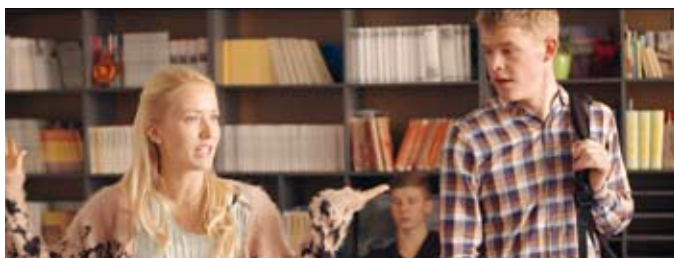
	Domestic	European	USA	Other	Total
2010	12	58	97	8	175
2011	23	71	117	6	217
2012	24	86	109	9	228
2013	22	80	121	12	235
2014	21	103	106	13	243

DOMESTIC FILMS PRODUCED 2010-2014

	Feature films	Animation	Documentaries	Shorts	Total
2010	4	1	34	6	45
2011	7	6	35	5	53
2012	10	8	34	4	56
2013	7	7	30	2	44
2014	6	8	28	7	49

NUMBER OF CINEMAS 2010-2014

	Screening places (all)	Permanently working cinemas	Multiplex cinemas	Screens	Digital screens
2010	49	12	3	74	15
2011	49	12	3	74	18
2012	45	10	3	70	18
2013	45	10	3	70	29
2014	48	12	3	78	36



TOP TEN 2014

Title	Country of Origin	Admissions	GBO EUR	Format
Frozen	USA	88 166	396 214	3D
Rio 2	USA	74 053	334 553	3D
How to Train Your Dragon 2	USA	68 367	310 702	3D
The Hobbit: The Battle of Five Armies	New Zealand/USA	61 603	412 808	3D
Let's Be Cops	USA	50 840	264 027	
Mr. Peabody and Sherman	USA	49 932	215 046	3D
Interstellar	USA/UK/Canada	48 674	256 226	
Penguins Of Madagascar	USA	45 595	209 644	3D
Nullpunkt/Zero Point	Estonia	43 304	196 352	
Lucy	France	43 064	226 558	

FILMS SCREENED (ALL) 2010-2014

Domestic films				
	Films	Admissions	GBO EUR	Market share
2010	23	43 317	144 089	2,03
2011	48	171 391	550 324	6,94
2012	49	195 844	761 097	7,57
2013	50	151 398	581 259	5,90
2014	28	123 065	520 488	4,73
European				
	Films	Admissions	GBO EUR	Market share
2010	90	273 245	1 003 198	11,06
2011	126	272 256	1 103 189	10,52
2012	166	399 327	1 739 504	15,44
2013	153	346 177	1 524 913	13,53
2014	148	518 733	2 394 119	19,95
USA				
	Films	Admissions	GBO EUR	Market share
2010	177	1 794 484	6 605 660	84,19
2011	164	1 997 556	8 278 635	80,83
2012	166	1 945 205	8 743 348	75,19
2013	158	1 990 330	9 332 041	77,79
2014	157	1 765 517	8 824 290	67,90
Other				
	Films	Admissions	GBO EUR	Market share
2010	10	20 395	65 242	0,96
2011	13	30 025	119 167	1,21
2012	14	46 619	185 189	1,80
2013	15	70 648	372 117	2,76
2014	20	192 889	1 015 686	7,42
Total All Films				
	Films	Admissions	GBO EUR	Adm. per Capita
2010	300	2 131 441	7 799 015	1,59
2011	351	2 471 228	10 051 315	1,80
2012	395	2 586 995	11 429 139	1,96
2013	376	2 558 553	11 810 329	1,93
2014	353	2 600 204	12 754 583	1,97

AVERAGE TICKET PRICE 2010-2014

	EUR
2010	3,7
2011	4,1
2012	4,4
2013	4,6
2014	4,9

ANNUAL STATE SUPPORT FOR FILM INDUSTRY 2011-2015

	National Film Centre of Latvia	Culture Capital Foundation	Total
	EUR	EUR	EUR
2011	1 651 197	344 092	1 995 289
2012	1 514 323	540 455	2 054 778
2013	2 086 496	567 679	2 654 175
2014	3 517 121	789 609	4 306 730
2015*	4 628 669	733 121	5 361 790

* projected

CINEMA PREMIERES 2010-2014

	Domestic	European	USA	Other	Total
2010	35	134	104	44	317
2011	28	116	117	42	303
2012	24	66	106	4	200
2013	27	50	116	27	220
2014	51	66	89	13	219

DOMESTIC FILMS PRODUCED 2010-2014

	Feature films	Animation	Documentaries	Shorts	Total
2010	3	10	19	3	35
2011	5*	4	17	2	28
2012	6	8	8	2	24
2013	4	3	18	2	27
2014	7**	11	30	4	52

* 1 Feature length animation ** 2 Feature length animation

NUMBER OF CINEMAS 2010-2014

	Screening places (all)	Permanently working cinemas	Multiplex cinemas	Screens	Digital screens
2010	26	17	4	63	11
2011	26	17	4	63	15
2012	25	17	4	62	28
2013	32	14	4	66	36
2014	29	15	4	64	44



TOP TEN 2014

Title	Country of Origin	Admissions	GB0 EUR	Format
Rio 2	USA	87 443	371 497	3D
Penguins of Madagascar	USA	71 967	324 115	3D
How to Train Your Dragon 2	USA	71 917	292 782	3D
Frozen	USA	57 134	241 617	3D
The Hobbit: Battle of the Five Armies	New Zealand/USA	47 861	270 123	3D
Mr. Peabody & Sherman	USA	44 294	181 632	3D
Lucy	France	44 101	208 909	
Interstellar	USA/UK/Canada	42 166	202 254	
The Boxtrolls	USA	39 424	172 231	3D
Maleficent	USA/United Kingdom	38 437	175 969	3D

FILMS SCREENED (ALL) 2010-2014

Domestic films				
	Films	Admissions	GB0 EUR	Market share
2010	42	146 379	330 010	6,95
2011	70	92 386	135 496	4,48
2012	56	103 040	284 317	4,51
2013	97	143 379	228 368	6,03
2014	109	175 207	443 717	7,58

European				
	Films	Admissions	GB0 EUR	Market share
2010	178	257 867	1 056 344	12,24
2011	156	192 435	870 260	9,34
2012	157	445 919	1 802 817	19,50
2013	231	267 900	1 114 170	11,27
2014	210	493 570	2 201 469	21,36

USA				
	Films	Admissions	GB0 EUR	Market share
2010	137	1 597 416	6 506 807	75,84
2011	194	1 675 126	6 802 103	81,27
2012	149	1 718 729	7 560 592	75,17
2013	191	1 768 158	7 998 473	74,36
2014	170	1 503 833	6 845 648	65,07

Other				
	Films	Admissions	GB0 EUR	Market share
2010	67	104 565	575 405	4,96
2011	51	101 202	580 911	4,91
2012	22	18 654	108 015	0,82
2013	77	198 249	968 874	8,34
2014	47	138 521	686 497	5,99

Total All Films				
	Films	Admissions	GB0 EUR	Adm. per Capita
2010	424	2 106 227	8 468 566	0,94
2011	471	2 061 149	8 388 770	1,00
2012	384	2 286 342	9 755 740	1,13
2013	596	2 377 686	10 309 885	1,18
2014	536	2 311 131	10 177 331	1,16

AVERAGE TICKET PRICE 2010-2014

	EUR
2010	4,02
2011	4,07
2012	4,27
2013	4,42
2014	4,64

ANNUAL STATE SUPPORT FOR FILM INDUSTRY 2011-2015

	Ministry of Culture	Cultural Foundation	Lithuanian Film Centre	Total
	EUR	EUR	EUR	EUR
2011	1 682 900	706 700	0	2 389 600
2012	1 323 665	625 290	0	1 948 955
2013	-	-	2 751 391	2 751 391
2014	-	-	3 024 501	3 024 501
2015			3 078 652	3 078 652

CINEMA PREMIERES 2010-2014

	Domestic	European	USA	Other	Total
2010	8	58	96	2	164
2011	10	63	109	3	185
2012	6	82	89	9	186
2013	15	56	119	5	195
2014	14	66	101	6	187

DOMESTIC FILMS PRODUCED 2010-2014

	Feature films	Animation	Documentaries	Shorts	Total
2010	4	4	11	13	32
2011	2	8	9	19	38
2012	4	10	18	1	33
2013	11	7	17	5	40
2014	8	7	18	7	40

NUMBER OF CINEMAS 2010-2014

	Screening places (all)	Permanently working cinemas	Multiplex cinemas	Screens	Digital screens
2010	45	42	9	95	9
2011	45	42	9	95	18
2012	42	42	9	95	21
2013	42	32	10	95	44
2014	42	32	10	95	44



TOP TEN 2014

Title	Country of Origin	Admissions	GB0 EUR	Format
Už Lietuvą!/Redirected	Lithuania/UK	292 654	1 344 041	
Frozen	USA	122 699	518 760	3D
Rio 2	USA	102 456	424 700	3D
Penguins of Madagascar	USA	95 882	421 977	3D
Valentinas už 2rų/Valentinas Behind the Doors	Lithuania	88 559	400 306	
How To Train Your Dragon 2	USA	89 806	376 049	3D
Interstellar	USA/UK/Canada	75 548	365 683	
Lošėjas/Spēlmanis/The Gambler	Lithuania/Latvia	76 891	357 144	
Hobbit: The Battle of Five Armies	New Zealand/USA	59 748	330 064	3D
Kaip pavogti žmoną/How to Steal a Wife	Lithuania	60 654	266 649	

FILMS SCREENED (PREMIERES) 2010-2014

Domestic films				
	Films	Admissions	GB0 EUR	Market share
2010	10	99 767	364 404	4,17
2011	12	296 693	1 065 697	10,44
2012	10	80 469	285 244	2,88
2013	17	510 924	2 045 844	16,49
2014	14	676 521	3 033 882	21,97

European				
	Films	Admissions	GB0 EUR	Market share
2010	58	422 008	1 550 554	14,85
2011	63	475 245	1 774 767	17,01
2012	82	553 719	2 127 264	17,88
2013	56	409 504	1 631 716	13,22
2014	66	422 518	1 835 201	13,71

USA				
	Films	Admissions	GB0 EUR	Market share
2010	96	1 853 048	6 891 017	77,53
2011	109	2 068 027	7 476 669	72,76
2012	89	2 121 490	8 326 559	75,92
2013	119	2 145 777	8 709 308	69,27
2014	101	1 881 143	8 465 770	61,08

Other				
	Films	Admissions	GB0 EUR	Market share
2010	2	15 325	173 227	0,64
2011	3	2 256	25 635	0,08
2012	9	38 762	144 142	1,39
2013	5	31 478	120 006	1,02
2014	6	99 645	380 570	3,24

Total All Films				
	Films	Admissions	GB0 EUR	Adm. per Capita
2010	166	2 390 148	7 428 648	0,72
2011	187	2 842 221	8 568 001	0,89
2012	190	2 794 440	8 755 945	0,93
2013	197	3 097 683	10 875 158	1,05
2014	187	3 079 827	13 715 423	1,05

AVERAGE TICKET PRICE 2010-2014

	EUR
2010	3,75
2011	3,62
2012	3,88
2013	4,04
2014	4,44

Baltic Feature Films

ESTONIAN FEATURE FILMS RELEASED 2012-2014

Original Title	English Title	Director	Year of Release
Risttuules	In the Crosswind	Martti Helde	2014
Ma ei tule tagasi	I Won't Come Back (EE/RU/FI/BL/KZ)	Ilmar Raag	2014
Maastik mitme kuuga	Landscape with Many Moons	Jaan Toomik	2014
Kirsitubakas	Cherry Tobacco	Katrin Maimik, Andres Maimik	2014
Nullpunkt	Zero Point	Mihkel Ulk	2014
The Man in the Orange Jacket	The Man in the Orange Jacket (LV/EE)	Aik Karapetian	2014
Väikelinna detektiivid ja Valge Daami saladus	Kid Detectives & The Secret of the White Lady	René Vilbre	2013
Mustad teemandid/Dimantes Negros	Black Diamonds (ES/PT/EE)	Miguel Alcantud	2013
Mandariinid	Tangerines (EE/GE)	Zaza Urushadze	2013
Kertu	Kertu	Ilmar Raag	2013
Free Range: ballaad maailma heakskiitmisest	Free Range: Ballad on Approving of the World	Veiko Õunpuu	2013
Lisa Limone ja Maroc Orange**	Lisa Limone & Maroc Orange (EE/FI)**	Mait Laas	2013
Kohtumõistja	The Arbitrer (EE/SE)	Kadri Kõusaar	2013
Elavad pildid	Living Images	Hardi Volmer	2013
Pitsad	Pizzas (LV/EE)	Laila Pakalniņa	2012
Deemonid	Demons	Ain Mäeots	2012
Kõik muusikud on kaabakad	All Musicians Are Bastards	Heleri Saarik	2012
Eestlanna Pariisis/Une estonienne a Paris	A Lady in Paris (FR/EE/BE)	Ilmar Raag	2012
Seenelkäik	Mushrooming	Toomas Hussar	2012
Puhastus/Puhdistus	Purge (FI/EE)	Antti Jokinen	2012
Üksik saar	Lonely Island (EE/LV/BL)	Peeter Simm	2012
Hella W	Hella W (FI/EE)	Juha Wuolijoki	2012
Vasaku jala reede	Bad Hair Friday	Arun Tamm, Andres Köpper	2012
Rat King	Rat King (FI/EE)	Petri Kotwica	2012
Umbkotid*	Douchebags*	Andres Maimik, Rain Tolk	2012

*TV Drama **Feature length animation

LATVIAN FEATURE FILMS RELEASED 2012-2014

Original Title	English Title	Director	Year of Release
Akmeņi manās kabatās*	Rocks in My Pockets (USA/LV)	Signe Baumane	2014
Džimlai Rūdi Rallallā	Then It's Hi! Hi! Hee!	Māris Putniņš, Jānis Cimermanis	2014
Izlaiduma gads	The Lesson (LV/RU)	Andris Gauja	2014
The Man in the Orange Jacket	The Man in the Orange Jacket (LV/EE)	Aik Karapetian	2014
Modris	Modris (LV/DE/GR)	Juris Kursietis	2014
OKI Okeāna vidū	Oki – in the Middle of the Ocean (LV/USA)	Māris Martinsons	2014
Zelta zirgs*	The Golden Horse (LV/LU/LT/DK)	Reinis Kalnaellis, Valentas Aškinis	2014
Lošējas	The Gambler (LT/LV)	Ignas Jonynas	2013
Miglā	In the Fog (DE/RU/LV/BY/NL)	Sergei Loznitsa	2013
Mammu es tevi mīlu	Mother I Love You	Jānis Nords	2013
Sēņotāji	Mushroomers	Ivars Tontegode	2013
Sapņu komanda	Dream Team 1935	Aigars Grauba	2012
Golfa straume zem ledus kalna	Gulf Stream Under The Iceberg (LV/RU)	Yevgeny Pashkevich	2012
Vientuļā sala	Lonely Island (EE/LV/BY)	Peeter Simm	2012
Mona	Mona (LV/IS)	Ināra Kolmane	2012
Cilvēki tur	People Out There	Aik Karapetian	2012
Picas	Pizzas (LV/EE)	Laila Pakalniņa	2012

*Feature length animation

LITHUANIAN FEATURE FILMS RELEASED 2012-2014

Original Title	English Title	Director	Year of Release
Aukso Žirgas*	The Golden Horse (LV/LU/LT/DK)	Reinis Kalnaellis, Valentas Aškinis	2014
Šventa Karvė	Holy Cow	Donatas Ulvydas	2014
Pakeliui	When You Wake Up	Ričardas Marcinkus	2014
Rūsys	The Cellar	Ričardas Matačius	2014
Gustavo nuotykių	Around the World on a Flying Windmill	Augustinas Gričius, Vaidas Lekavičius	2014
Valentinas už 2rų	Valentinas Behind the Doors	Evaldas Kubilius	2014
Nesamasis laikas	Non Present Time	Mykolas Vildžiūnas	2014
Santa	Santa (LT/FI)	Marius Ivaškevičius	2014
Už Lietuvą!	Redirected (LT/GB)	Emilis Velyvis	2014
Kaip pavogti žmoną	How to Steal a Wife	Donatas Ulvydas	2013
Laikas kartu	Time Together	Mark Aerial Waller	2013
Moterys meluoja geriau. Kristina	Women Lie Better. Kristina	Alydas Šlepikas	2013
Vardas tamsoje	A Name in the Dark	Agnė Marcinkevičiūtė	2013
Lošėjas	The Gambler (LT/LV)	Ignas Jonynas	2013
Ekskursantė	The Excursionist	Audrius Juzėnas	2013
Streikas	We Will Riot	Romas Zabarauskas	2013
Laiškai Sofijai	Letters to Sofija (LT/UK)	Robert Mullan	2013
Emigrantai	Emigrants	Justinas Krisiūna	2013
Valentinas vienas	Valentine Alone	Donatas Ulvydas	2013
Tyli naktis	Christmas. Uncensored	Maris Martinsons	2013
Aurora	Vanishing Waves (LT/FR/BE)	Kristina Buožytė	2012
Moters saulė	The woman sun	Ruslanas Korostenskis	2012
Narcizas	Narcissus (LT/GR)	Dovilė Gasiūnaitė	2012
Miegančių drugelių tvirtovė	Fortress of Sleeping Butterflies	Algimantas Puipa	2012

*Feature length animation

Co-Operation Platform

Baltic Films is a co-operation platform promoting films from Estonia, Latvia and Lithuania. Baltic Films represents the three countries at major film festivals and markets.



National Film Institutions

Estonian Film Institute

Uus 3, Tallinn 10111, Estonia
Tel: +372 627 6060
film@filmi.ee
www.filmi.ee

National Film Centre of Latvia

Peitavas 10, Rīga LV1011, Latvia
Tel: +371 6735 8878
nfc@nfc.gov.lv
www.nfc.lv

Lithuanian Film Centre

Z. Sierakauskio st. 15, Vilnius LT03105, Lithuania
Tel: +370 5213 0547
info@lkc.lt
www.lkc.lt



Creative
Europe
MEDIA

Key Figures

KEY FIGURES ESTONIA

Total population	1 315 819
Population of capital city Tallinn	411 063
Currency	EUR
Standard VAT rate	20%
Personal income tax	21%
Corporate tax exemption since 2000	
GDP 2013	18 708 314 542
GDP per capita 2013	14 218
Average monthly income 2013	949
Number of cinemas 2014	48
Total number of screens 2014	78
Number of multiplex cinemas 2014	3
Average ticket price 2014	5
Gross Box Office 2014	12 754 583
Number of Admissions 2014	2 600 204
Admissions per capita 2014	1,97
Market share of domestic films 2014	4,73%
Market share of European films	19,95%
Annual state support 2015	7 397 728

KEY FIGURES LATVIA

Total population	1 988 400
Population of capital city Riga	695 539
Currency	EUR
Standard VAT rate	21%
Personal income tax	23%
GDP 2013	23 159 732 000
GDP per capita 2013	11 647
Average monthly income 2013	716
Number of cinemas 2014	15
Number of screens 2014	64
Number of multiplex cinemas 2014	4
Average ticket price 2014	4,37
Gross Box Office 2014	10 177 331
Number of Admissions 2014	2 311 131
Admissions per capita 2014	1,16
Market share of domestic films 2014	7,58%
Market share of European films	21,36%
Annual state support 2015	5 361 790

KEY FIGURES LITHUANIA

Total population	2 921 900
Population of capital city Vilnius	539 939
Currency	EUR
Standard VAT rate	21%
Personal income tax 2013	24%
GDP per capita 2013	11 842
Average monthly income 2013	696,7
Number of cinemas 2014	42
Number of screens 2014	95
Number of multiplex cinemas 2014	10
Average ticket price 2014	4,29
Gross Box Office 2014	14 373 356
Number of Admissions 2014	3 234 595
Admissions per capita 2014	1,11
Market share of domestic films 2014	21,79%
Market share of European films 2014	13,71%
Annual state support 2015	3 078 652